

Initiatives for the Hawke's Bay Service Sector



Attract and retain people with the right attitude and aptitude



Increase the number of school leavers transitioning into the sector



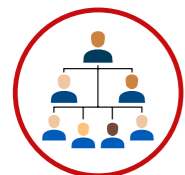
Increase access to and engagement with training



Develop and maintain high quality qualifications and programmes that meet the needs of industry



Increase productivity by developing core skills



Improve business and management capability

	2018				2019				Future
	Q1	Q2	Q3	Q4	Q1	Q2	Q3	Q4	
Attract and retain people with the right attitude and aptitude	Mobilise resources, assign owners, and agree to action plans	1.1 Promote careers in the service sector							
		1.2 Make use of opportunities to attract staff							
		1.3 Support positive business culture							
Increase the number of school leavers transitioning into the sector	Mobilise resources, assign owners, and agree to action plans	2.1 Foster relationships between schools and industry							
		2.2 Increase the number of Gateway opportunities in schools							
		2.3 Support youth development schemes							
Increase access to and engagement with training	Mobilise resources, assign owners, and agree to action plans	3.1 Promote beneficial relationships between employers and educators							
		3.2 Raise awareness of on-job training delivery							
		3.3 Promote driver licensing schemes							
Develop and maintain high quality qualifications and programmes that meet the needs of industry	Mobilise resources, assign owners, and agree to action plans	4.1 Training and qualifications meet the specific needs of industry							
Increase productivity by developing core skills	Mobilise resources, assign owners, and agree to action plans	5.1 Cultivate recognised employability skills							
		5.2 Increase engagement with literacy and numeracy support available							
Improve business and management capability	Mobilise resources, assign owners, and agree to action plans	6.1 Create opportunities for the sector to work together							
		6.2 Share information across the service sector							