

# Initiatives for the Manawatu Whanganui service sector



**Attract and retain people with the right attitude and aptitude**



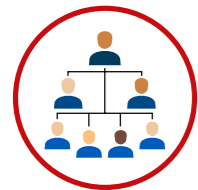
**Increase the number of school leavers transitioning into the sector**



**Increase access to and engagement with training**



**Develop and maintain high quality qualifications and programmes that meet the needs of industry**



**Improve business and management capability**

Mobilise resources, assign owners, and agree to action plans

	2017		2018				2019		Future
	Q3	Q4	Q1	Q2	Q3	Q4	Q1	Q2	
Attract and retain people with the right attitude and aptitude			1.1 Find the service sector ambassadors and share their success stories						
			1.2 Reduce barriers to employment for people with disabilities, injury or illness						
			1.3 Identify, map and promote regional support services for employers and job seekers						
			1.4 Support programmes that build employer confidence						
			1.5 Support and promote service sector awards						
Increase the number of school leavers transitioning into the sector	2.1 Businesses make use of opportunities to promote the sector								
	2.2 Increase the number of Gateway opportunities in schools in the Manawatū-Whanganui region								
	2.3 Capture the youth voice when discussing workforce needs								
Increase access to and engagement with training	3.1 Ensure businesses are aware of what training material and resources are available to help develop their employees								
	3.2 Develop insights into how training increases engagement and motivates staff, therefore providing return on investment								
Develop and maintain high quality qualifications and programmes that meet the needs of industry				4.1 Foster mutually beneficial relationships between employers and educators					
				6.1 Increase engagement with programmes that develop leadership skills in SMEs					
Improve business and management capability				6.2 Establish a Manawatū-Whanganui leadership and skills forum					
	6.3 Encourage employers and managers to act as mentors for their staff								